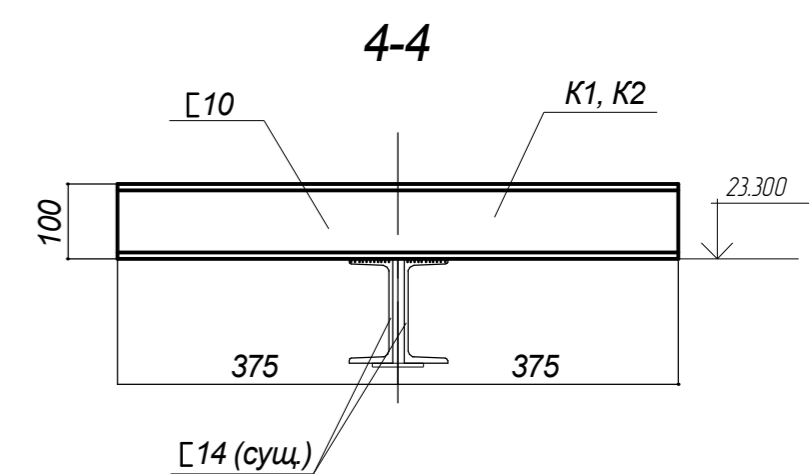
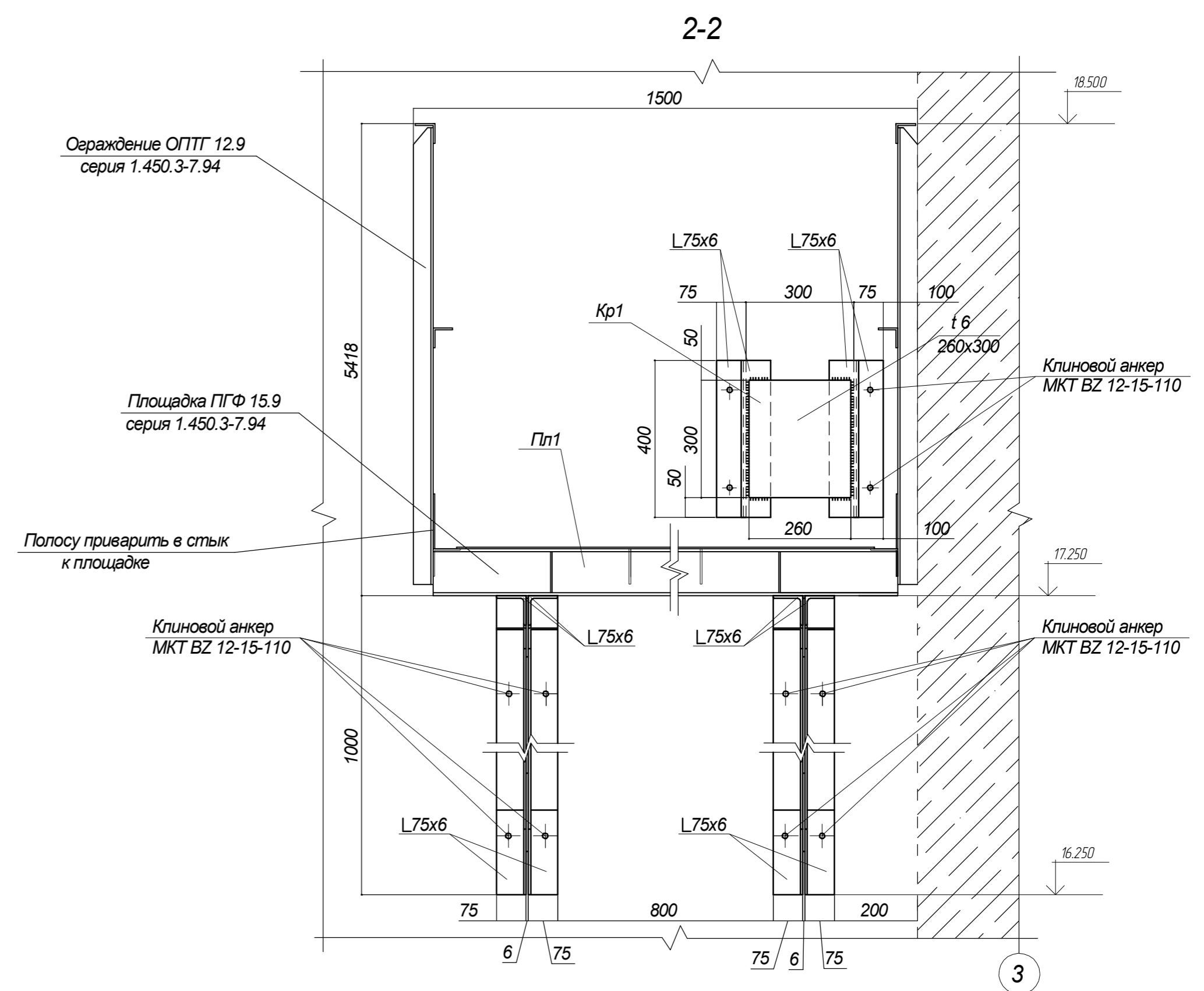


Architectural floor plan of a room with a kitchenette and bathroom. The plan shows a kitchenette with a sink (Kp1), stove (Пn1), and refrigerator (K3). A bathroom is located at the bottom right with a toilet (K1) and sink (K2). The room has a total width of 6000 mm and a total length of 9000 mm. Various dimensions and door swing indicators are provided.



Копировал: Формат А2